

***Congregation of the
Sisters of Mercy
South Central Province***



***Annual Trustee Report
and Financial Statements
2022***

TABLE OF CONTENTS

<i>The Story of the Sisters of Mercy</i>	2
<i>Mission</i>	4
<i>Structural Organisation</i>	5
<i>Public Benefit</i>	7
<i>Advancement of Religion</i>	9
<i>Healthcare and the Compassionate Care of the Sick</i>	11
<i>Alleviation of Poverty: Promotion of Education, Justice and other Charitable Activities</i>	13
<i>Promotion of Education</i>	15
<i>Justice, Peace and Reconciliation</i>	18
<i>Overseas Development and Support</i>	19
<i>Supporting Other Charities and Groups</i>	20
<i>Pastoral and Social Care and Development</i>	24
<i>Critical Global and Local Issues</i>	27
<i>Heritage and Upkeep of Listed Buildings</i>	28
<i>Financial Review 2022</i>	30
<i>Future Plans</i>	34
<i>Structure, Governance and Management</i>	35
<i>Reference and Administrative Details</i>	41
<i>Statement of Trustees Responsibilities</i>	43
<i>Independent Auditors' Report</i>	44
<i>Statement of Financial Activities</i>	47
<i>Balance Sheet</i>	48
<i>Statement of Changes in Funds</i>	49
<i>Cash Flow Statement</i>	50
<i>Notes to the Financial Statements</i>	51

Note - Any reference in this report to “**Province**” refers to the **Charity** of the Sisters of Mercy, South Central Province.

Any reference in this report to “**Sister**” or “**Sisters**” refers to the **Members** of the Congregation of the Sisters of Mercy South Central Province.

The Story of the Sisters of Mercy

The Congregation of the Sisters of Mercy is an international Roman Catholic Religious Congregation founded in 1831 by Catherine McAuley.



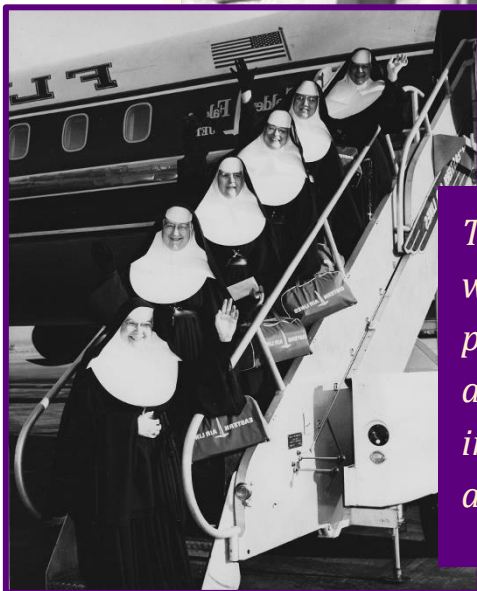
Catherine, influenced by her Christian faith, used her inheritance to set up a centre in Baggot Street from which she and her early companions responded to the needs of people disadvantaged in society.

The Sisters of Mercy have been engaged in children's needs and development since the opening of the first House of Mercy in Baggot Street, Dublin in 1827.

Throughout Ireland, this outreach continued through the years in more formal settings such as orphanages, industrial schools, group homes as well as in after-care facilities for those who had left their direct care.

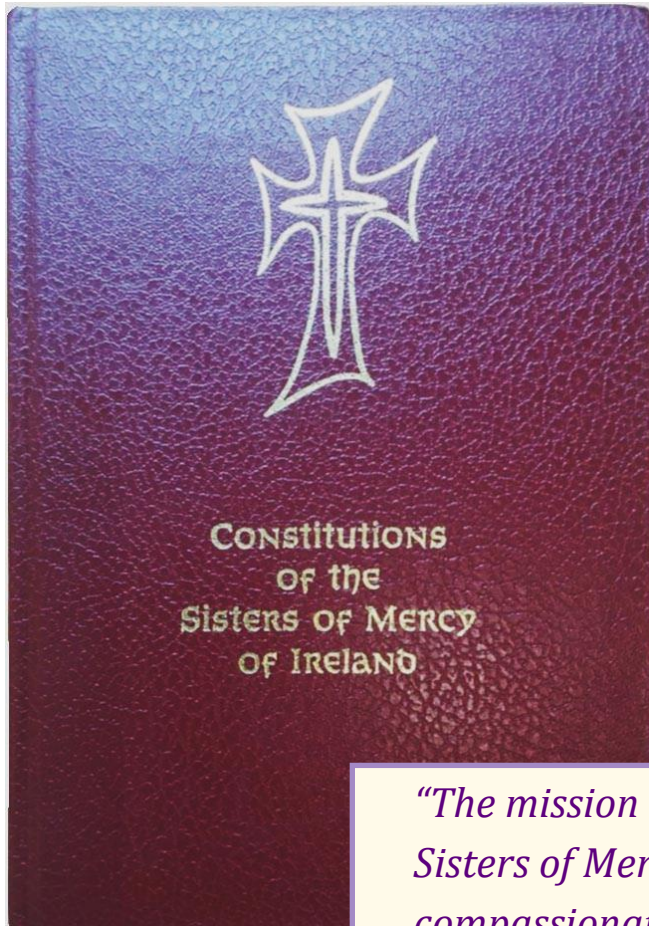
Catherine knew that providing basic education would help people improve their lives. The Sisters of Mercy also recognized and responded to the need to improve healthcare.

In the years that followed their founding, the Sisters of Mercy established schools and hospitals and cared in whatever way possible for the needs of the people who were poorest.



The Sisters were to the fore in social work as it developed and did pioneering work in the area of addiction and social service centres in the past and more recently in the area of care of the earth.

MISSION



“The mission of the Congregation of the Sisters of Mercy is to bear witness to the compassionate and merciful love of God.

Our administration of temporal goods must express the Gospel call to justice, charity and almsgiving...

We use these goods for our common life, for the various apostolates of mercy and for the needs of the Church and especially for the poor and deprived.”

Constitutions 104 (1985)

STRUCTURAL ORGANISATION

In the recent past, there has been a consistent effort by the Sisters of Mercy to continue their outreach to people on the margins, through working for justice, ecology and advocacy for the voiceless in today’s world. Now, because of their age, many Sisters focus on pastoral care and praying for others.

For administrative purposes the Congregation structurally comprises six Provinces (canonical and civil entities) - four in Ireland (Northern, Southern, Western and South Central) one in Kenya and one in South Africa. There is a smaller group (designated area) of the Congregation in the United States. These structures are under review following the 2018 Congregational Chapter.

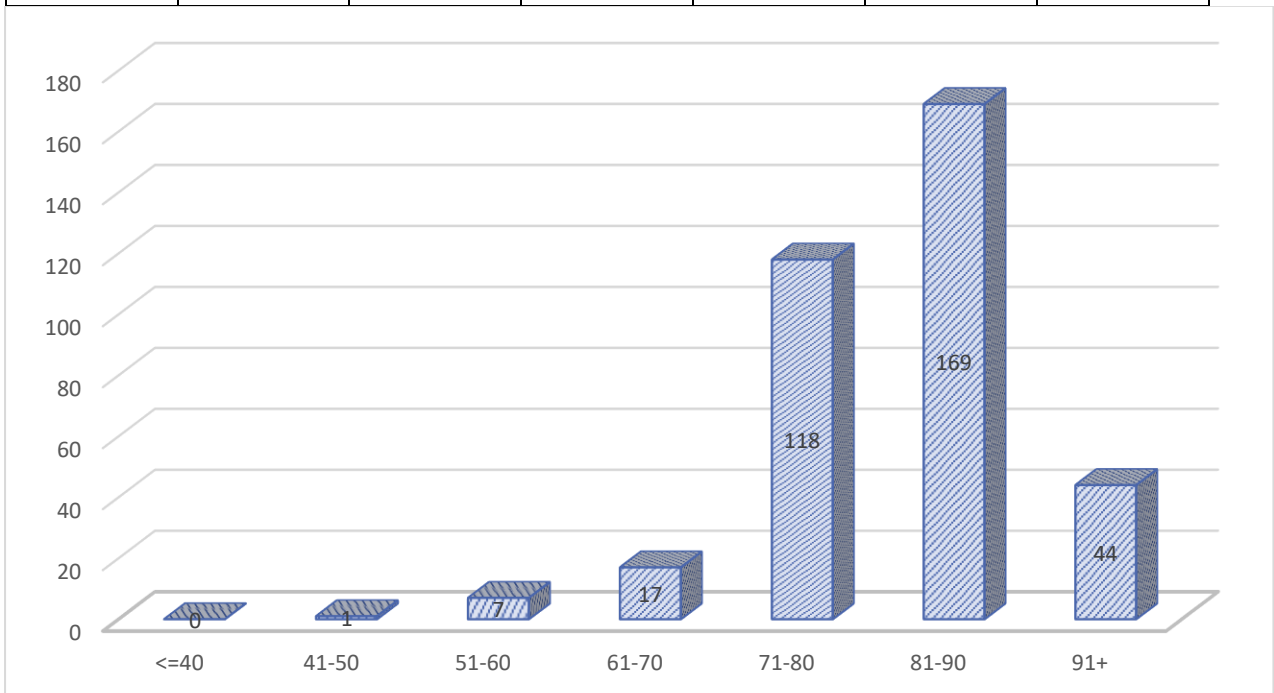
The South Central Province, which stretches from Dublin to Clare has responsibility for the mission area in Brazil founded in 1982.

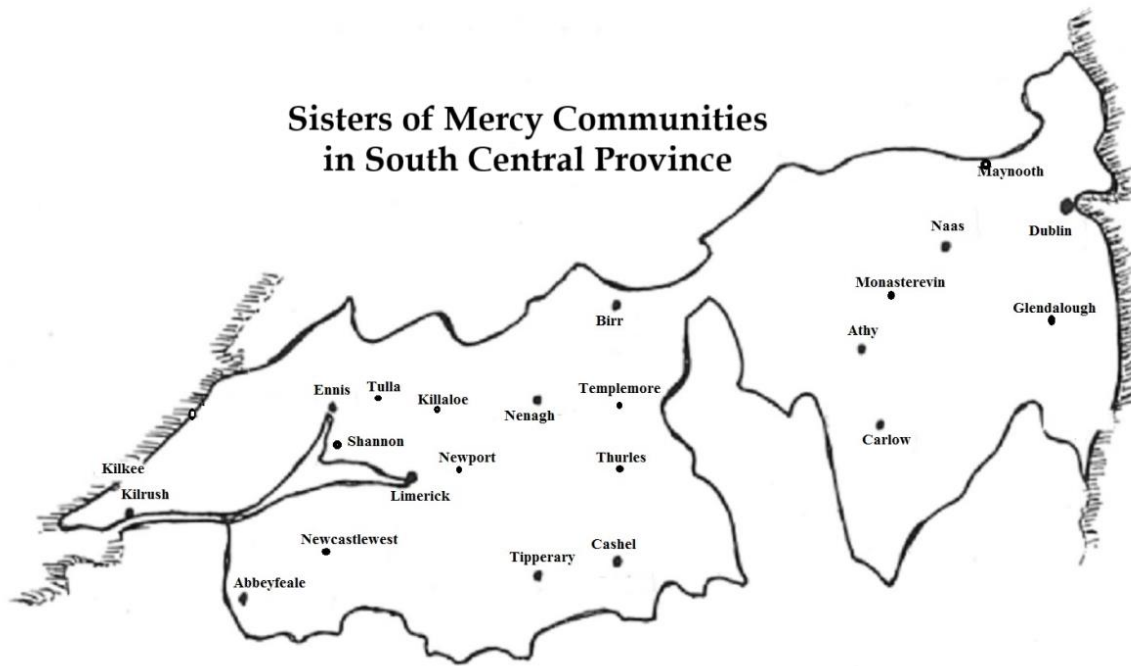
SOUTH CENTRAL PROVINCE DEC 2022

AGE RANGE OF SISTERS

AVERAGE AGE 81. TOTAL 356

41-50	51-60	61-70	71-80	81-90	91+	Total
1	7	17	118	169	44	356





OBJECTS OF THE CHARITY

The main objects of the Charity are the advancement of religion, care for the members of the Province throughout their lives, and the alleviation of poverty, through the promotion of charitable activities, the support of religious and other charitable works carried out in the name of the Province.



PUBLIC BENEFIT

The Trustees consider that the aims and activities of the Charity illustrate that the Charity is of public benefit. We deliver public benefit through religious activities, overseas aid, ecological awareness and a variety of social and religious services. These are provided to families, older people and children, especially to people experiencing poverty.

The beneficiaries are the people of the Republic of Ireland and of other parts of the world through response to needs in developing countries.

We try to reach out to those in need worldwide without making distinction on grounds of age, gender, sexual orientation, disability, nationality, ethnic identity, political or religious opinion.

The Trustees confirm that they have complied with the requirements of the Charities Act ROI 2009.

OVERVIEW of ACTIVITY PROFILE in 2022

Given the age profile of the members (average age 81), most members are officially retired from paid employment and dependent on pensions (Note 1). At the same time almost every Sister who can, makes some contribution, however small, to promoting religion by prayer, to alleviating poverty through pastoral work in parishes, justice work, social work and the support of missions outside of Ireland.

In 2022, as the impact of Covid 19 began to wane, the Sisters began to move back again into intra and inter-community interaction. They engaged once again in activities in parishes and with marginalised groups in their local areas.

Local Leadership

Internally those who are more active share responsibility for the care of older members as local leaders, nurses and activities animators.

Provincial Leadership

Seven Sisters are involved full time in internal **administration in the Province**: four as Trustees exercising leadership responsibility for the whole Province, one as Provincial Treasurer; one as HR and Employment Co-ordinator and one as Stewardship Co-ordinator.

¹ The members of the Province voluntarily donate their earnings (mostly pensions with a very small number of salaries and stipends) to the Charity and therefore have no independent means of support. Many give their services voluntarily in their various ministries and continue to do so well beyond the normal retirement age. Where the Charity has identified a critical need for a service for which no funding is available, it has released a member who would otherwise be in paid employment to work in a voluntary capacity or for a small stipend.

Congregational Leadership

Two other members of the Province work in administration at Congregational level while a further two Sisters are members of the Congregational Leadership Team.

Role of Trustees

With regard to Sisters' lives over the year 2022, the Trustees aimed to:

- ✚ Enable all members of the Province to further the mission of the Congregation and to live their religious commitment to the full.
- ✚ Support and resource those who are engaged in "active" ministry.
- ✚ Value the prayer ministry of all especially older, infirm and housebound members.
- ✚ Ensure adequate supports and care for ageing and frail members.
- ✚ Visit every Sister in her own home through canonical visitation of all the houses and communities in the Province
- ✚ Support the transitioning of Mercy partners and those Trust Bodies and companies who carry forward work initiated by members in the past.
- ✚ Collaborate with other groups having a similar vision.

Visitation in the Province

With the advent of 2022, the gradual emergence from the Covid 19 pandemic began to take place. With the lifting of restrictions nationally the Trustees embarked on visiting every Sister in her home during the course of the year. It was a major undertaking involving planning, logistics and time. However, the benefits both to the members who received the visits with open arms and true Mercy Provinceity, and for the Trustees who were heartened and encouraged by the realised possibility of meeting the members face to face again, were multifaceted.

From a governance perspective, Visitation was a moment of encounter with all the members and a chance to oversee aspects of day-to-day life in the Province.

ADVANCEMENT OF RELIGION

The advancement of religion, the nurturing of faith and the spiritual dimension of life is of prime importance to the Sisters in the Province. All aspects of the Charity's work are rooted in the Christian faith commitment of the members. Apart from their own prayer life, most Sisters actively contribute to the promotion of the spiritual and prayer life of the local faith community.

Sisters of Mercy are committed to daily personal prayer and each local Mercy community determines the pattern of communal prayer that suits its situation. Participation in prayer ministry (such as retreat work, meditation, mindfulness and prayer, reflection groups in parish and community contexts) contributes to the wellbeing of people spiritually and mentally and to the up-building of parish community.



Our growing awareness of the profound mystery at the heart of the whole of Creation and the sacredness of all that exists has enriched our spirituality and changed our lives in many ways.

Sr. Esther Hayes, Primary Diocesan Religious Education Advisor, Killaloe Diocese

Sr. Esther Hayes, on her return to Ireland from the US in the 1990s, received the mission of working in the area of Faith Formation in the diocese of Killaloe. She was seconded to the Diocesan Advisors team in the area of Primary Schools Catechetics and was still in this position in 2022. As part of a team of three, she covers fifty-six parishes or fifteen Pastoral Areas. She has responsibility for the Special schools and many ASD (Autistic Syndrome Disorder classes) a ministry she loves dearly.



*Bishop Fintan Monahan
and Sr. Esther Hayes*

The team also works in four Special schools, six Gaelscoileanna and a few Multi-Denominational Schools. Sr. Esther works in the seventy schools in the Northern end of the Diocese and in the East Clare Region while her two colleagues minister in the West Clare and Gaelscoileanna.

Another important feature of her ministry is pre-sacramental meetings with parents, in-service meetings with the Teachers and clergy in order to introduce and develop understanding of the innovative programs and any other topics relevant to

faith-formation. (Sr. Esther also serves on the Marriage Tribunal team as an Auditor).

The Diocesan Advisor continues to play a key role sharing information that will enhance the ethos, faith, religious education, management, and evangelization of Catholic Primary Schools. The Diocesan Advisor's work is rooted in the present with a keen eye to the future.

Sr. Marie McNamara, Diocesan Advisor for Catechetics in Secondary Schools



Sr. Marie McNamara has been a diocesan advisor for Catechetics in the diocese of Killaloe for many years. This entails visiting the twenty-one schools in the diocese, supporting religious education teachers with resources, and planning workshops. She also provides resources for parishes during various liturgical seasons and is a reader and Eucharistic Minister in her own parish.

She is passionate about the promotion of Lectio Divina groups in the diocese of Killaloe. Lectio Divina is about meeting the Word of God with our lives. Sr. Marie has set up many Lectio Divina groups among the clergy in the diocese, with the hope that they would promote it in their parishes, as she promotes it among the Sisters of Mercy in her local community. She is currently training-in the person who will take over the Catechetics work after her and is busy in the background passing on the skills and resources needed.

Suaimhneas Chaoimhin – Glendalough 21st Anniversary Celebrations

Suaimhneas Chaoimhín celebrated the 21st Anniversary of its foundation on June 3, 2022. Over its twenty-one years of providing space for prayer and companionship on the spiritual journey thousands of people had come - adults seeking solitary space alone, organised groups of adults and young people who came on retreats and pilgrim walks in the hallowed Valley of Glendalough. Many people came and visited the Hermitage Centre on the Open Days on St. Kevin's Day, Saturday 4th and Sunday 5th June 2022 which included a charity concert of local artists, pilgrimages; a ritual in the meditation garden of the Church and thanksgiving for all who have helped to highlight the special place which Glendalough is - a place of great natural beauty, and Celtic tradition. It is seen as 'a thin place' where the veil between this world and the invisible one beyond seems transparent and a place made sacred by the generations of men and women who have come in search of meaning and to meet their God.



Group of walking pilgrims on St. Kevin's Way.

HEALTHCARE AND COMPASSIONATE CARE OF THE SICK

2022 - Involvement in Health Care for Sisters of Mercy South Central Province

Health Care has become the primary focus of the Province over the last few years. With the advent of Covid 19, everybody became acutely aware of the excellent generous service we receive from all our health care workers. Two Sisters in the province work full time in primary care in the HSE.

SISTERS WHO WORK IN HEALTH CARE

Provincial Health Care Resource Group

The Health Care Resource Group is comprised of five Sisters in the Province who have been involved all their lives in many capacities of healthcare. Their role is to advise Local Leaders in general about available health services for Sisters and they are open to speak with Sisters individually and to assist Sisters in practical ways related to healthcare, when requested. The members assist with Fair Deal applications if needed and support Sisters on their journey towards nursing home care. The group is also a resource for the Provincial Leadership Team and during 2022, the Health Care Resource Group took the lead in raising awareness among Province Leadership about Advance Healthcare Directives and the implementation of the Assisted Decision Making (Capacity) Act 2015. The group meets with their link person on the Provincial Leadership Team about three times a year and reports to the full Provincial Leadership Team once a year.

Related Health Care facilities

The **National Rehabilitation Province, Dun Laoghaire (NRH)** has been in the trusteeship of the Congregation since its foundation in 1961. In the early years of the new millennium, the Sisters of Mercy decided to seek a voluntary trust to take on its trustee responsibilities in the NRH. In 2009, the Sisters of Mercy (as part of its voluntary contribution to the State for Redress) offered the State (HSE) the Province site, subject to a long lease back to NewCo, a not-for-profit company, which agreed to carry the trusteeship (in tandem with the Minister for Health) of the National Rehabilitation Province into the future. Phase one of a new 'state of the arts' Province was opened at the NRH in June 2019.



In 2022, Mercy SCP continues to carry the burden of substantial legal costs as it endeavours to see the completion of an agreed long leaseback between the HSE (for the State) and NewCo CLG. The negotiations, started more than ten years ago, are still ongoing. At the time of writing this report, we still await the final signing off of the lease between NewCo and the HSE.

Nursing Home Care

The Charity owns and operates two Nursing Homes, Catherine McAuley House, Beaumont, Dublin, and Catherine McAuley House, Limerick. During the early part of 2022, the Trustees continued to focus their attention on these homes because of the ongoing adjustments required to continue the battle with Covid 19. The Nursing Homes were also a source of increased expenditure for the Charity because of medical requirements at this time. Once again, the work of the frontline staff in these homes went far and above the call of duty. The fact that no resident in either home died from Covid in 2021/2022 is due to the excellent care afforded by the administrative staff, nurses and carers in these nursing homes as well as to the Sisters themselves who took the necessary precautions.



Care of Older Members



At the end of 2022, we note that 92.5% of our members are over 70. In some larger communities and in our nursing care units, increasingly we employ lay people to cater for the Sisters' needs. Facilities Management Companies in five areas - North Dublin, South Dublin, Limerick, North Tipperary / Offaly and Clare, oversee care, catering, cleaning and maintenance in larger community houses in view of our own diminishing capacity. These communities are seen as assisted living communities.

Oversight of Facilities Management Companies

We hold weekly and monthly meetings with the facilities management companies. The HR coordinator, stewardship personnel and local leaders attend all these meetings. Individual members of the Trustees attend these meetings at regular intervals. All Trustees meet company management thrice yearly for general oversight of the services. The purpose of the meetings is to evaluate the services provided and to control spending.

Given the increasing care needs in the group, Sisters who are active help in coordinating supportive and pastoral roles in these communities. These supplement on a spiritual and pastoral level the care supplied by the Facilities Management Companies and third party contractors.

ALLEVIATION OF POVERTY AND ECONOMIC HARDSHIP

**THROUGH PROMOTION OF EDUCATION, JUSTICE, ECOLOGY
AND OTHER CHARITABLE ACTIVITIES**

*“The Sisters of Mercy were born into the Church
as the ‘walking nuns’
who sought to alleviate and eradicate
pain, want and misery.”
Constitutions 42 (1985)*



The Sisters of Mercy aim to honour their mission in changing circumstances through responsiveness to changing needs, an enlarged consciousness of global poverty and its causes and by using our international Mercy network.

We make our contribution to the alleviation of poverty through:

- ✚ enabling members to carry out meaningful **social and pastoral work** based on the needs of local communities and parishes and on their own expertise, skills and energies;
- ✚ supporting morally and financially charitable work carried out by **other agencies** for the benefit of those who are disadvantaged;
- ✚ supporting where possible the empowerment of people who experience poverty and marginalisation;
- ✚ continuing to raise **awareness of** social and ecological **injustice**;
- ✚ encouraging a **collaborative** and **networking** approach to addressing poverty and disadvantage.

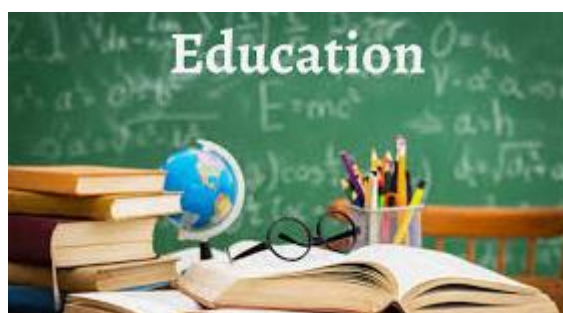
The Charity supports through its human, financial and other resources the charitable works carried out in the name of the Province. Through co-operation and sponsorship, we enable this objective, which is rooted in the priority outreach of the Province to those who have been disadvantaged and marginalised by society,

*'In the spirit of Catherine McAuley
standing with people who are needy and marginalised
will always be a priority for us'.*

Constitutions 43 (1985)

PROMOTION OF EDUCATION

Providing access to education has been central to the work of the Sisters of Mercy since the foundation of the Congregation. The provision of formal education was a major ministry of the Charity for over 180 years. We gave special care and attention to children from families that were economically and environmentally stressed or deprived. Mercy schools adapted to meet emerging needs of the society and aimed to be centres of creativity, innovation and academic excellence.



All our teaching Sisters have now retired from full time classroom teaching and from positions of leadership in schools.

TRUSTEESHIP OF PRIMARY EDUCATION

Mercy SCP has transferred the trusteeship of the enterprise of primary education to diocesan trusteeship in the five dioceses that span the jurisdiction of the Province – Dublin, Cashel and Emly, Kildare and Leighlin, Killaloe and Limerick.

The following schools remain under the trusteeship of Mercy SCP at the time of writing this report:

- St. Paul's Special School, Beaumont
- Province School, Temple Street Children's University Province, Dublin.
- Doon Primary School, Co Limerick (because of impending amalgamation).

The trusteeship of the enterprise of education in Catherine McAuley School and Scoil Chaitríona, Baggot Street, Dublin, where Catherine McAuley opened a school in 1827, is transferred to the Archdiocese of Dublin. The Charity retains the ownership of the property because of its heritage value to the Congregation given its close proximity to the founding house.

In 2022, negotiations to transfer the buildings of Killaloe Girls' Primary School and St. Senan's Primary School in Kilrush to the Killaloe Diocese are still in process.

TRUSTEESHIP OF SECONDARY EDUCATION

Catholic Education an Irish Schools Trust (CEIST)

In 2007 CEIST, which is now an independent entity, was set up to act as Trustees for Secondary Schools for the Sisters of Mercy in Ireland and for four other Religious Congregations. In 2022 CEIST celebrated 15 years in existence. Among the new initiatives in 2022 CEIST introduced certification for their schools Religious Education Junior Cycle Programs. Schools which participate means that learning in RE will be certified by the patron as part of each students Junior Cycle Profile of Achievement (JCPA) under “other areas of learning”.



for Secondary Schools for the Sisters of Mercy in Ireland and for four other Religious Congregations. In 2022 CEIST celebrated 15 years in existence. Among the new initiatives in 2022 CEIST introduced certification for their schools Religious Education Junior

Cycle Programs. Schools which participate means that learning in RE will be certified by the patron as part of each students Junior Cycle Profile of Achievement (JCPA) under “other areas of learning”.

The EDUCENA foundation works with the CEIST Trust to enable the trustee resourcing of their Schools and managing and optimizing the financial resources that will be needed in the future. The task of transferring the schools from the Sisters of Mercy to EDUCENA continues to involve considerable work and expertise on the part of the trustees and their legal and property representatives.

EDUCENA

The EDUCENA Foundation works with the CEIST Trust to enable the resourcing of trusteeship of Catholic post primary schools under the auspices of CEIST. Educena manages and optimises the financial resources needed into the future to fund the work of CEIST. It has now secured the transfer to its balance sheet of fifteen schools in the SCP and in conjunction with Mercy SCP will continue to oversee the legal work involved in transferring two remaining schools, St Mary’s, Arklow and Sancta Maria College Ballyroan, Dublin. The task of transferring the schools involves considerable work on the part of the Charity’s trustees and their legal and property advisers. It is also very costly legally.

Both CEIST and EDUCENA have revised their Constitutions so that they are completely in line with the requirements of the Companies Act of 2014.

COMMUNITY SCHOOLS

In 2022, South Central Province continued its role as Joint Trustee of four Community schools/colleges along with the ETB (Education Training Board) in Kilrush Co Clare, Kilkee Co Clare, Rathkeale Co Limerick and together with the ETB and the Archdiocese of Dublin in Tallaght, Dublin. CEIST acts as agent of the Province in exercising active trusteeship of these schools and the Province covers the costs involved.

TRUSTEESHIP OF THIRD LEVEL EDUCATION

Mercy SCP maintains a link with Mary Immaculate Training College, Limerick as the Provincial Leader may nominate three Trustees and three members of the Governing Body.

The Provincial Leader is also a Member of the Bonaventure Trust whose objective is the funding of theology and theological research development in Mary Immaculate Training College.

Sr. Concepta Foley, Post Primary Diocesan Adviser in the Dublin Archdiocese

In 2021 Sr. Concepta Foley retired from a career in post primary teaching and was immediately invited to become a Post Primary Diocesan Adviser in the Dublin Archdiocese (181 schools).



She began a new journey, travelling the roads visiting Religious Education Teams and Chaplains. She delivers an Ember Faith Development Programme that trains 5th Year Students to take responsibility for the enhancement of Ethos in their school. Part of her job is to ensure that no Ember group is left out of any activity because their school does not have the finance to allow them to be present.

She also coordinates the Pope John Paul II Awards and collaborates with Education Trusts, including CEIST, on a variety of prayer days and school in-service training. She strongly feels that communication is key and collaboration is the way forward. Young people dream about what the future of the Church could be. In her ministry Sr. Concepta walks with those who want to make this a reality - they walk together in search of God's truth for them. Sr. Concepta feels that reflection is paramount and that every voice must be heard, as young people will be the first to see those who are excluded.

FUNDING FOR EDUCATION

A fund for education support is set aside from the overall donations budget of the Charity. A committee meets quarterly to consider requests and allocate funds.

A member of the Trustees oversees the work of the committee.

In 2022, the Trustees allocated €30,000 to this Fund.

In line with requests received the committee allocated €20,000 from the fund to help students in further education and/or apprenticeships with college fees and educational resources. They allocated the remaining €10,000 to people in situations of economic hardship.

Justice, Peace and Reconciliation

Awareness Raising on Social Justice and Ecology

Conscious of the diversity and independence of all life we join with others in responding with compassion to critical issues of injustice.

(Chapter Statement 2018)

Justice Advisory Group



In the Mercy South Central Province a justice advisory group meets a number of times every year to discern and plan how to raise awareness of injustices and to suggest possible responses. The members communicate regularly with local communities. In 2022 most meetings were face to face. The weekly internal-to-the-Province Noticeboard newsletter is frequently used to encourage good practice and give practical tips in the area of ecological responsibility. Each year, on World Food Day, the group

draws attention to inequality in the world. Communities are regularly encouraged to fast and contribute financially to projects in developing countries.

Overseas Development and Support

*'Belonging to the Universal Church,
missionary in her very nature,
we seek to incarnate the mercy of God,
according to the limits of our resources, in missionary countries.'*
Constitutions 45 (1985).

Brazil Mission

Celebration of the 40th Anniversary of our Mercy Mission in Brazil

In May 2022 the South Central Province celebrated the 40th anniversary of our Mercy Mission in Brazil. Those Sisters who were instrumental in the setting up of the foundation came to celebrate the fruit of their labours and Sisters who are supporters of the mission were also present for the occasion. Those gathered had a unique opportunity to pray and sing together in Portuguese, the language of Brazil, and to reminisce on the early days of life on the mission. The stories shared about the beginnings of the mission painted word pictures



of heroic, valiant women fired with zeal for the mission to spread the Good News of the Gospel and to be present to the Brazilian people in whatever way and wherever they could.

Sr. Celine remains in Brazil and continues the Mercy Mission in the following ways:

- through her Literacy Project, Projeto

Esperança.

- through her work with 'catadores' (those who gathered recyclable materials (and food) from the City dump but who now work together as a cooperative called Cotremare, where they have better conditions).

- through the 'Toque de Esperança', a project in the most abandoned area on the periphery of Campina Grande. Here women meet together, join in activities and work at soap making, packaging, sales etc. from which they earn a little to help them in their daily life.

In November 2022, Sr. Celine received a 'Motion of Applause' award from the Municipal District of Campina Grande for her contribution in the area of education and social inclusion over the years. The ceremony took place in the 'Touch Hope' Foundation House where the literacy class happens. The class members, Councillors from the Municipal District, and friends were present. The work and contribution the Sisters of Mercy in Campina was recognised by Councillor Jô Olivério and in her speech she thanked the Congregation.

Supporting Other Charities and Groups

ADAPT DOMESTIC ABUSE SERVICES

Adapt Domestic Abuse Service – Limerick

In 2022, the Sisters of Mercy South Central Province donated €8,000 to Adapt Domestic Abuse Services in Limerick.



This donation was used to provide ongoing emergency supplies for families that were accommodated in the service refuge. During 2022 the service accommodated a large number of families in their refuge, many of whom remained there for the year. Most of these families come into the refuge without social welfare payments, so for the first couple of weeks in refuge the service provides them with emergency food, clothing, bedding, toiletries, nappies etc. This donation assisted the service by enabling it to support these families and to ensure that their basic needs were being met.

Bedford Row Family Project – Limerick

In 2022, the Sisters of Mercy SCP, donated €30,000 (€20,000 through the Congregation's Solidarity Fund) to the Bedford Row Family project.



Bedford Row Family Project supports families affected by imprisonment. Children are the priority in their work with families.

Community Law and Mediation – Limerick

In 2022, the Sisters of Mercy South Central Province donated €15,000 to Community Law and Mediation, Limerick.

Community Law and Mediation Limerick is an independent law and mediation centre which provides free legal information, advice, advocacy and representation in areas of law for Housing Issues, Social Welfare, Wills (advice only), Debt, Consumer Issues, Homelessness, Employment, Access to Education, Family Law (advice only) and Equality. The service is free and available to people living in the regeneration areas & to residents of other disadvantaged areas within Limerick City.



**Community
Law & Mediation**
LIMERICK

Doras – Limerick

In 2022 the Sisters of Mercy South Central Province donated €20,000 to Doras.

The funding was used to keep direct support service for asylum seekers, refugees and migrants operational throughout 2022. It was used to pay staff and to cover other associated costs for their Advice and Information Centre. The services are available free of charge to everyone, regardless of their status or situation



The Family Resource Centre Inchicore, Dublin 8

The Family Resource Centre's mission is to work with those most marginalised and entrenched in generational poverty. It also reaches out to families afflicted by addictions and women who experience violence in their homes. Sisters of Mercy South Central Province donated €10,000 in 2022 which helped in part to fund a Family Support Worker. The many public benefits accruing from the



Creche at Family Resource Centre, Inchicore

interventions of the Family Support Worker include working with the local schools, the Gardaí, Social services, providing Wellbeing programmes etc.

Mercy Law Resource Centre – Cork Street Dublin 8



In 2022, South Central Province donated €80,000 to the Mercy Law Resource Centre (MLRC) which was set up by the Sisters of Mercy, South Central Province. It is now an independent law centre, charity and company limited by guarantee providing accessible free legal advice and representation to people who are homeless or at risk of homelessness in the areas of housing and related social welfare law.

St. Stephen's Green Trust

St Stephen's Green Trust (SSGT) is an independent social justice grant-maker which works across the island of Ireland. The primary purpose of the Trust is to make grants to groups to allow them to effect positive social change in areas which trustees deem to be critical.



One of SSGT's strategic goals is to support people in the international protection process to become full members of society. This goal was supported by Sisters of Mercy (South Central Province) in 2022 with a donation of €10,000 that contributed to two distinct programmes of work.

The **Stand Up, Speak Out (SUSO)**, programme, focused on addressing the lack of a strong asylum seeker and refugee voice within communities and in local and national decision-making processes and

Activities for Children living in Direct Provision Centres, focused

on supporting grassroots groups to engage children to participate in sporting, recreational and cultural activities with their peers in their local community.



Participants at the SUSO presentation in Leinster House

Children's Grief Centre



The mission of the Children's Grief Centre is to provide a free support service to children, young people and their families affected by loss following bereavement, separation, and divorce. The Centre supports between fifty and sixty children per week and has grown in demand since it set up in 2009 offering unique one-to-one support sessions. To date it has given a voice to around 1,800 grieving young people.

The Sisters of Mercy South Central Province support the Children's Grief Centre through the provision of premises, personnel and the payment of utilities.

In 2022, renovations began on a building at the John Henry Newman Campus at Mary Immaculate College, which was gifted to the Children's Grief Centre by the Congregation of the Sisters of Mercy, South Central Province.

<https://www.childrengriefcentre.ie/>

Collaborating with St. Vincent de Paul Society



The charity supports the St. Vincent de Paul Society through regular donations at national and local level. In 2022 the Province donated €25,000 to the St. Vincent de Paul Society. Local communities and individual Sisters make further contributions in their local areas. A number of our Sisters also serve as volunteers or contact persons with the St. Vincent de Paul Society in towns and cities around the Province.

Pastoral and Social Care

The Charity has always been concerned with promoting pastoral and social development initiatives and responding to the particular needs of the time and place in line with Gospel values. Many of our Sisters actively support voluntary groups and befriend individuals who tend to be marginalised. Today, these include homeless people, prisoners and their families, travellers, refugees, asylum seekers and migrants. There has been a strong tradition of providing Provinceity to people in need who call to the convent door. While the need has lessened in many areas or is met by other agencies, there are a number of convents which continue to provide this type of support.

OUTREACH TO UKRAINIAN REFUGEES

Templemore Convent of Mercy



In March 2022, the Sisters of Mercy pledged the Convent of Mercy, Templemore for accommodation for Ukrainian refugees and signed a two-year lease agreement with the Minister for Children, Equality, Disability, Integration and Youth in April 2022. At present there are over thirty Ukrainian refugees

living in the beautiful convent building, many of whom are employed in the town and whose children are attending the local schools.

2 Nessian Court, Limerick

This is a four bed family residential home in Limerick City which the Sisters of Mercy, South Central Province have allocated for refugees fleeing the war in Ukraine, in the Limerick area. A two-year lease has been signed with the International Organization for Migration (IOM). At present, two separate families live in the house.

Outreach to the elderly and housebound

In many of the areas where Sisters of Mercy have lived there is a strong tradition of keeping in contact with elderly people, especially those who are housebound, living alone



or incapacitated. This sometimes involves providing a service such as grocery shopping or accompanying people to medical appointments. Some Sisters engage with active retired groups. Others regularly visit day care centres and community Provinces.

Outreach to Prisoners and their Families:

From the earliest days of the Congregation, Sisters have been involved in prison work. Sisters who play some role in the pastoral care of prisoners include:

- ✚ a number who visit those in prison;
- ✚ others who keep in contact with a particular prisoner by letter or personal visits;
- ✚ some who befriend those who have served sentences or support family members of those who are in prison;
- ✚ Some members continue to work in prison chaplaincy;
- ✚ One Sister works with the Irish Commission for Prisoners Overseas.



Outreach to and Support of Past Residents of Industrial Schools

The Sisters of Mercy were engaged in the care of vulnerable young people since the opening of Baggot Street in 1827. This involvement continued through the years in more formal settings such as orphanages, industrial schools and group homes. Many young people maintained contact and friendship with Sisters who had been their carers in childhood and members in turn provided informal after care services and supports. In light of revelations of the harshness of regimes in industrial schools in the past, the Congregation established a Helpline and Counselling Service in 1996. This was taken over



and expanded by CORI the following year and operated as 'Faoiseamh' until 2011. Then it was replaced by the service called Towards Healing, a One Church service financed jointly by AMRI and the Irish Bishops Conference for former residents and their families. In total to date the Charity has given €2.6 million to the

funding of this counselling service. In 2022, €40,000 was given to enable a healing response through Towards Healing. Individual former residents have been helped to access other preferred counselling services and engage in ongoing education courses on request during 2022. Also, many former residents who experience economic hardship are helped financially through difficult periods of their lives.

The services of the Congregational and Provincial Archivists and their staff as well as the services of Provincial administration staff are constantly available to past residents of our institutions who seek their records. The numbers seeking these records increased exponentially in 2022. All requests were handled through the Congregational Archives and the Provincial Administration offices.

Critical Global and Local Issues

The global aspect of Mercy collaboration gives life and hope to all involved – it underlines the power of each individual when we remember that one person, Catherine McAuley, had the initial dream.

Mercy International Association

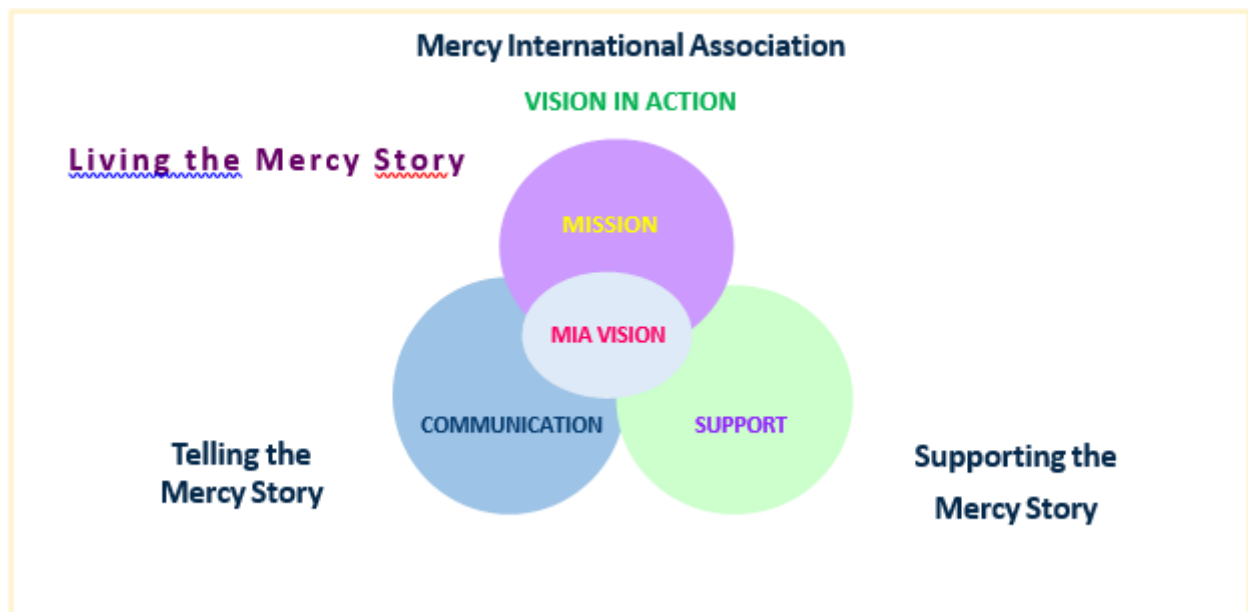
The leaders of Mercy Congregations around the world work together to share some aspects of the common work of the Sisters of Mercy. The diagram below shows its purpose.



Mercy SCP for its part contributes financially and with personnel to the overall Global effort to communicate the vision of Catherine McAuley and to put it into action.

In 2022, South Central Province donated €15,000 to projects in Kenya.

One Sister from the South Central Province works full time in the Heritage and Spirituality Department of Mercy International Centre.



HERITAGE AND UPKEEP OF LISTED BUILDINGS

Archives

The purpose of the archives service in Mercy South Central Province, located in Booterstown, Co. Dublin, is to ensure that a record of the lives of the Sisters in the Province, their mission, ministries and works is preserved. The Mercy story links into the Irish social history of the last two hundred years, particularly the areas of education, nursing, religious education, prison chaplaincy, and social work with particular focus on women and the disadvantaged in society.

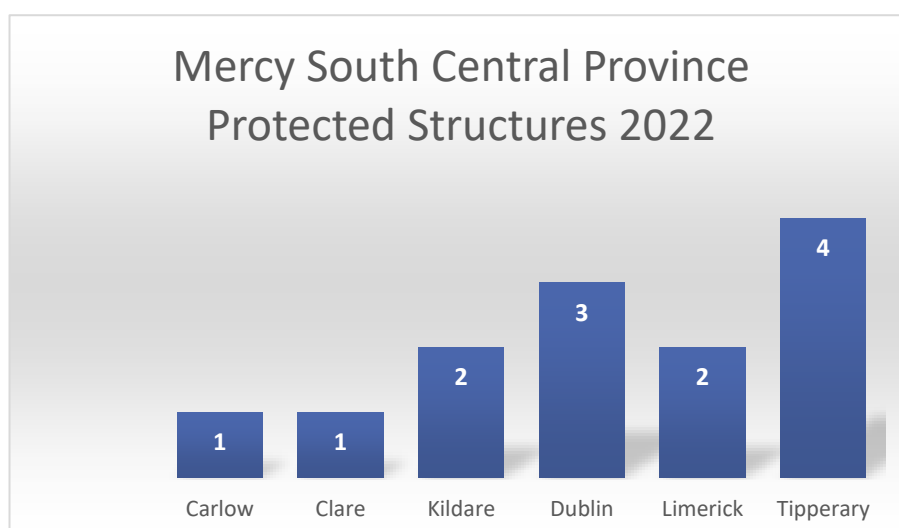
2022

Several Sisters throughout the Province assisted the archival work, during 2022. This included updating the official register, researching records queries, collecting annals written in each community, gathering-in personal papers of Sisters, dealing with archival material when a convent closes, writing and preserving obituaries for Sisters who died, processing and arranging all material which comes to the archives and keeping financial accounts of expenditure for this work.

Protected Structures

Some of our older convents are listed buildings which the Charity is obliged to maintain.

It was determined that, while there are a number of historical and listed buildings included in the assets of the charity, none of these are held and maintained principally for their contribution to knowledge and culture, and therefore, in the view of the Trustees, no assets satisfied the definition of heritage assets under Charity SORP (FRS 102).



There are thirteen protected structures in South Central Province. The Charity has an obligation to ensure that no aspect of the listed structure is endangered. When refurbishment needs to be carried out on any of these buildings more stringent planning laws are applied by the local planning authority. Certain repair works that are normally routine on a building may require planning permission on a protected structure. Sourcing expertise and materials for renovation can be costly. During 2022 no major upkeep projects were undertaken.



St. Mary's Convent, Nenagh

Cemeteries

Cemeteries are also a focus of care. Mercy South Central Province has an overall plan to see that all cemeteries under its jurisdiction are kept in good condition and are prepared as low maintenance sites.

FINANCIAL REVIEW 2022

A summary of the year's results can be found on page 47 of the accounts. During the year, total income amounted to €13.4m (2021: €15.9m). This was made up mainly of the salaries, pensions, gratuities and tax related income earned by the Sisters and donations. The other major items include nursing home income of €2.9m (2021: €3m), gains on disposal of tangible assets of €286k (2021: €2.6m), and investment income of €224k (2021: €333k).

The cost of raising funds of €462k (2021: €460k) has increased on the prior year due to slight increases in support and governance costs.

Expenditure on charitable activities was €15m (2021: €15m).

Congregational living costs were €4.9m (2021: €4.9m). Healthcare costs of €8.1m were substantially unchanged from the previous year. Relief of poverty, promotion of education, justice and other charitable activities increased only slightly, from €634k to €641k.

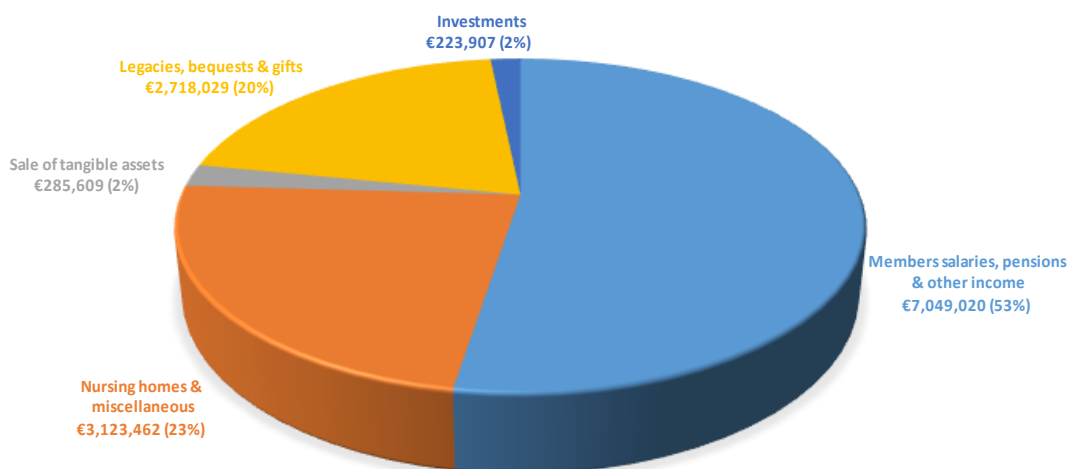
Upkeep of listed assets costs for the year were €511k (2021: €435k), due to significant work undertaken on maintaining the cemeteries.

Resources expended totalled €15.5m (2021: €15.5m). Investment management fees were €419k (2021: €421k) and governance costs were €163k (2021: €185k).

There were net losses on investments of €11.3m (2021: gain €12.9m). This reflects the very significant falls in the investment markets worldwide during 2022, due to the invasion of Ukraine by Russia, and the consequent sanctions imposed on the latter, generating impacts on the global economy. In this new context, the world economy is affected by increases in the prices of raw materials and energy costs, as well as by growing tensions in the supply chain. While the markets have improved since the year end, they remain volatile. This is an unrealised loss and reflects the value of the investments at a specific point in time. The portfolio is held and managed for the long term and it is likely that over time this loss will be reversed.

There were net resources expended of €2m (2021: increase €508k). This was before the net losses on investment assets, which when taken into account results in a net decrease in funds in the year of €13.4m (2021: increase €13.4m).

Income 2022



Investments

At 31 December 2022, the Charity had fixed and current investments of **€82.9m** (including cash deposits of **€3.1m**) managed by professional investment management firms. The purpose of the investments is to assist in funding the promotion of the charitable objectives of the Charity, by generating income and other gains, while limiting risk to capital depletion. The objective is to generate, over time and taking market conditions into account, a return which exceeds the rate of inflation.

The majority of the investment funds are under the management of J & E Davy and State Street Global Advisors Europe Limited and are managed under discretionary mandates within risk parameters agreed between each Investment Manager and the Charity. Investment Managers have been instructed to avoid investing in companies which fall foul of certain ethical criteria and, where possible, to favour stocks of companies that provide a positive benefit to society.

The Charity invests in a socially responsible manner and views its investments through the prism of ESG or Environmental, Social and Governance. The Charity seeks to deploy its capital to companies that are addressing climate change, that have strong corporate governance practices and that have a lower carbon footprint. In recent years, the Charity has invested in companies that are focused on long term global sustainability as well as in green and social bonds issued by Ireland and other European governments.

The Trustees, with their investment advisors, review the investments on a regular basis.

Policy on Reserves

At the end of the financial year, the total funds of the charity amounted to €120m. A sum of €25.2m is represented by properties and other fixed assets essential for the running of the charity. The Trustees have designated another €73.6m to provide for mission and ministry works and the care and welfare of the members. The general fund of €21.2m represents unrestricted funds available at the discretion of the Trustees in furtherance of the charitable objectives of the Charity. Details are given in note 22 of these Financial Statements. The funds will be reviewed annually and transfers made where necessary.

	1 January 2022	New designations/ allocations	Utilised/ realised	Transfers	31 December 2022
	€	€	€	€	€
Designated as follows:					
Tangible fixed assets and intangible assets	26,234,649	498,423	(1,442,940)	-	25,290,132
Congregational living	24,040,000	1,908,150	(4,356,620)	-	21,591,530
Healthcare	24,000,000	4,447,473	(8,498,963)	-	19,948,510
Other Ministries	35,476,000	(2,221,176)	(1,292,731)	-	31,962,093
General fund	23,651,668	(2,300,252)	(102,043)	-	21,249,373
Total	133,402,317	2,332,618	(15,693,297)	-	120,041,638

An actuarial review was performed as of 31 December 2021 with a view to assessing the future reserve requirements of the Charity in relation to Congregational Living and Healthcare. A previous review of this nature took place in 2014 and assessed the future reserve requirements across all the designated reserves. There have been a number of changes in assumptions in the intervening period, including the impact of changes in inflation and other variables, and on foot of the latest review a number of transfers between designated reserves were made by the Trustees to reflect the latest estimate of funds required to meet future obligations.

Purposes of designated funds:

Tangible fixed assets and intangible assets fund

The tangible fixed assets and intangible assets fund represents the net book value of the Charity's tangible and intangible fixed assets. The reserve recognises the fact that the assets are required for the day-to day work of the Charity and that the fund value would not be easily realisable if needed to meet operating costs or future contingencies.

Congregational Living

The congregational living fund consists of funds that the Trustees have designated to provide for the costs related to Congregational Living - the advancement of Religion into the future. An actuarial review, as of 31 December 2021, was undertaken to consider these costs and it was estimated that €24.04m would be required to be set aside in order to provide a modest sum per Sister for this purpose. For 2022 and 2021, related income and expenditure was allocated to this fund.

Healthcare

The healthcare fund consists of funds that the Trustees have designated to provide for the costs of healthcare and the compassionate care of the sick and those in need into the future. An actuarial review, as of 31 December 2021, was undertaken to consider these costs and it was estimated that €24m would be required to finance these costs. For 2022 and 2021, related income and expenditure was allocated to this fund.

Other Ministries

The direct ministry fund consists of funds that the Trustees have designated to provide for the support of direct ministry into the future. These ministries include relief of poverty, promotion of education, justice, upkeep of listed assets, and other charitable activities. The allocation of the required funding to Other Ministries, after Tangible fixed assets and intangible assets, Congregational Living and Healthcare, should be 60% of the remaining funds. This was approved in the 2014 review. Following the latest review €31.9m has been allocated to the fund, on this basis.

General Fund

The general fund of €21.2m represents unrestricted funds available at the discretion of the Trustees in furtherance of the charitable objectives of the Charity.

FUTUREPLANS

The Provincial Leader and Team will continue to give attention to their governance responsibilities as Trustees of the Charity.

They will review needs and spending plans and make every effort to manage the existing assets as efficiently as possible in order to generate the income necessary to achieve the Charity's aims.

The Charity plans to continue to give support to various works of the Charity, to their members who work in them, as well as to their colleagues and collaborators with whom they are associated.

There will be continuing commitment to the on-going care of the members of the Charity. Concern for frail older members will require the ongoing review of community houses and the assessment of their suitability for ageing communities. Where necessary Nursing Home Care will be accessed for Members requiring full-time care.

Charity-wide objectives 2023:

- Ongoing engagement with review of life and the mission in the context of the 2018 General and 2019 Provincial Chapters. Supporting and resourcing those who are actively engaged in ministry and caring for elderly and frail members.
- Collaboration with the Mercy International Association and Mercy Global Action to examine the themes of eco-justice and social justice and to plan for action in furtherance of the Mercy mission.
- Providing opportunities for our communities, associates, colleagues and others to grow in continued awareness of eco-justice issues.
- Supporting organisations / projects that respond to the housing crisis in Ireland, the situation with refugees/migrants, prisoners and justice issues. Collaborating with AMRI on these and relevant issues
- Reviewing Health and Safety measures in the Communities and Buildings with professional assistance.
- Reviewing our accommodation strategy: We will continue to respond to falling numbers and increasing age profile, making the necessary adjustments in the provision of accommodation and care.
- Ensuring compliance with the policies and procedures of the National Board for the Safeguarding of Children in the Catholic Church in Ireland and our statutory obligations in the areas of child safeguarding and vulnerable adults. Ensuring compliance with all statutory requirements for good governance.
- Collaborating with the Congregational Leadership Team and other Provinces in developing and implementing policies that ensure compliance with all relevant civil law and our own Constitutions.

STRUCTURE, GOVERNANCE AND MANAGEMENT

Nature of Governing Document

The governing instrument of the Province is the Constitutions of the Sisters of Mercy which was adopted by the General Chapter of the Congregation in August 1994 and approved by the Congregation for Institutes of Consecrated Life (Rome) in April 1995. The Province, as noted above, is one of four Provinces in Ireland and is an unincorporated association.

The governmental structure of the Congregation of the Sisters of Mercy involves a number of inter-connected units: Local, Provincial and Congregational. The nature of the authority in each unit is described in the Constitutions. The Province is a major unit of the Congregation having the personnel and other resources to support its own life, mission and membership.

Method Adopted for Appointing Trustees (Provincial Leadership Team)

The Charity is governed by the Provincial Leader and the Provincial Leadership Team who are elected by members of the Province (at a Provincial Chapter) and approved by the Congregational Leader and her Team. Their term of office is six years. The Provincial Leadership Team, who are the Trustees of the Charity, are based in the Provincial Office, Oldtown, Sallins Road, Naas, Co Kildare. Members of the Provincial Leadership Team are chosen for their expertise and skills as well as their experience and knowledge of the Congregation, its nature and mission.

All Trustees are members of the Congregation of the Sisters of Mercy and as such their living and personal costs are borne by the Charity. They receive no remuneration for their services as Trustees.

Organisational Structure and Decision Making

The Provincial Leader and members of her Team are the Trustees of the Charity. With regard to decision-making, the Trustees take responsibility for the overall running of the Charity, in accordance with the Constitutions. The Trustees meet on a regular basis to review developments with regard to the Charity and its activities. Every six years an extended meeting, called a Chapter, is held. It is representative of all the members. It is a period of reflection, evaluation and planning, during which the participants assess the current reality, develop policies, set directions and elect leadership.

During 2022 the Trustees attended formal training courses organised by the Charities Regulator, PwC, ABRI, AMRI, L & P, and Mason Hayes & Curran on the duties of Trustees. They seek guidance and advice as necessary from their legal, investment, property, financial and other advisors on the issues which arise in carrying out their duties. In addition, the Trustees have established a number of advisory groups. The function of these groups, whose membership includes men and women with a range of relevant expertise, is to advise the Trustees on different aspects of stewardship and the general management of the assets of the Province.

There are systems of accountability operational throughout the Province. At the six yearly Chapter meeting the Trustees make a general and financial report to the members. The Provincial Treasurer is appointed by the Provincial Leader with the consent of her Team. The Provincial Treasurer administers the affairs of the Charity/Province under the direction of the Provincial Leader and her Team. The majority of the income of the Charity/Province comes from members' pensions and to a lesser extent from salaries and stipends, sale of property and income from investments. The salary, stipend and pension income are voluntarily donated by the members to a common fund, administered through the Provincial Stewardship office.

Collaboration and Partnership

It is the policy of the Charity to work in partnership and collaboration with their ministry colleagues, with statutory and voluntary bodies, and with other religious congregations, parish and diocesan groups in serving the local and wider community. In some instances, members are employed by these organisations, whilst in other cases they work as volunteers.

Risk Management

The Trustees are committed to ongoing risk assessment and monitoring. This process is supported by our financial advisory committee, who work closely with the Trustees in this area. The Risk Policy for the Province forms part of the Governance Code.

In 2022, the finance advisory committee looked at the risks the Charity faces and reviewed the measures already in place, or needing to be put in place, to deal with them.

The Trustees have identified four areas where risks may occur:

- Governance and Management
- Operational
- Financial
- Laws and regulation



Governance and management consider the efficiency of the Trustee body. Risks considered include a lack of planning, a Trustee body which lacked sufficient skills or appropriate decision-making procedures. Such risks could include a lack of training / induction or poor stewardship of resources – human, financial and property. The Trustees have addressed these risks by operating both annual and longer-term plans, holding regular Trustee meetings which include the monitoring of actual performance against these plans, having meaningful induction / handover for incoming Trustees, attending Trustee training days, seeking third party advice as required.

Operational looks at the risks inherent in the Province’s activities including the operation of its Nursing Homes and assisted living houses – and the risk of any members being engaged in inappropriate activities, possible unsuitability of buildings, poor maintenance, shortcomings in the services provided, difficulties with staffing, poor health and safety standards, lack of a disaster recovery policy.

The Trustees are assisted in the above by financial and legal advisors, the finance advisory committee, HR and Health and Safety personnel. There are also others who assist the Trustees in the management of appropriate risks. These include: property advisors, investment advisors, the Stewardship Co-ordinator, the Safeguarding Committee and the Health Care Resource Group.

The Province has a full time Human Resource Manager who during 2022 continued to monitor compliance with employment law and conducted workshops on good practice across the Province. She oversaw the management of issues arising from health and safety issues. She also provided training in health and safety at regular intervals.

Financial considers the financial capacity of the Charity and ensuring it has the available financial resources to continue to carry out its activities both now and in the years ahead. This incorporates the management of the operating (day-to-day) position, capital or building requirements and the returns earned on the Charity's investment portfolios. These risks are mitigated in a variety of ways, including budgeting, the setting of an investment strategy / investment objectives that consider diversity, prudence and liquidity criteria, regular financial and investment reporting against budget, cash flow planning and the appointment of a Financial Controller. The Finance Advisory Committee met regularly via zoom in 2022.

Laws and Regulations looks at the effects of government policies, the consequences of non-compliance with laws and regulations, and poor risk assessment.

Having assessed the major risks to which the charity is exposed the Trustees believe that they have established effective methods to mitigate the risks:

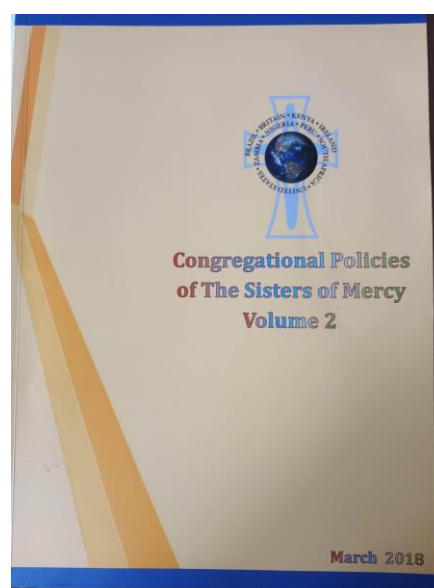
- obtaining appropriate professional advice and engaging the services of a financial controller;
- monitoring and, where appropriate, ensuring the operational and business risks faced by the charity; and
- developing policies, procedures, systems and controls.

The trustees have considered the situation arising from the invasion of Ukraine by Russia, and the consequent sanctions imposed on the latter. These sanctions are generating impacts on the global economy that, at the date of preparation of these financial statements, are unpredictable.

In this new context, the world economy is affected by increases in the prices of certain goods, particularly energy, as well as by growing tensions in the supply chain and impacts on financial markets. At the time of finalisation of these financial statements, the main impact on the organisation was the volatility experienced by investments in the period, which resulted in a significant reduction in the value of investments in the year amounting to €11.2m. The trustees will continue to monitor the impacts of same on costs, budgets and cash flow projection.

Congregational Policies

The Trustees, in collaboration with the Congregational Leadership Team, ensure that policies and good practice guidelines are developed, circulated and implemented and that these are regularly evaluated and updated. The Trustees have taken steps to ensure that the Province is fully compliant with all legislative requirements. Policies are updated on a regular basis. An updated handbook of policies was published in 2018.



Safeguarding

Since the mid 1990's the Congregation of the Sisters of Mercy has had a Safeguarding Policy in place and it has been reviewed regularly. The policy aims to encourage adequate awareness and best practice among all members of the Congregation, and those working with them, to ensure that all children and vulnerable adults are safeguarded from abuse of any kind. The Charity is committed to a culture of safeguarding and to ensuring compliance with best practice in this area. The Trustees are proactive in complying with civil and ecclesiastical requirements for safeguarding. The Trustees review annually the implementation of its Safeguarding Policy and Procedures and this process is subject to monitoring by the Congregational Leadership Team and the NBSCCCI (National Body for Safeguarding of Children in the Catholic Church, Ireland).



Property

“For the sake of our Mercy mission, the Congregation and each Province has the right to acquire and possess, to administer and alienate property, temporal goods and revenues according to the norms of universal law and these constitutions, with due respect for civil law.”

Constitutions 119 (1995)

“We value the resources of the earth as gifts of God and use them in a spirit of stewardship ... In the spirit of religious poverty we seek to balance concern for our future with support and compassion for poor and needy people.”

Constitutions 118 (1995)

All our possessions are held in trust for the mission of the Congregation. As property trustees we aim to promote the mission, addressing the needs of our members and other needs in the wider community.

The relevant professional advice is taken into account in the areas of leases and agreements, protected structures, planning, health and safety legislation, acquisition, refurbishment and disposal of property and all legally binding issues and transactions. The Province has Property Advisors to give advice and make recommendations on issues relating to property when requested by the Provincial Leadership Team.

Most properties are currently held in one of the following property holding companies:

- Sisters of Mercy SCP Company Limited by Guarantee
- The McAuley Trust SCP Company Limited by Guarantee
- Mercy Trust SCP Company Limited by Guarantee
- Misericord SCP Company Limited by Guarantee

REFERENCE AND ADMINISTRATIVE DETAILS

Name of Charity:	Congregation of the Sisters of Mercy, South Central Province
Charity Number: CRA Number:	CHY 1566 20002305
Address of Principal Office:	Provincial Office, Oldtown, Sallins Road, Naas, Co. Kildare W91A5 RK
Provincial Leadership Team:	Sr. Brenda Dolphin, Provincial Leader Sr. Patricia O’Meara, Assistant Provincial Leader Sr. Margaret Prendergast Sr. Nóirín Long (RIP June 2022) Sr. Ailish O’Brien (appointed October 4, 2021)
Provincial Treasurer:	Sr. Mary Monica Smalle
Independent Auditors:	PricewaterhouseCoopers Chartered Accountants and Statutory Audit Firm 1 Spencer Dock North Wall Quay Dublin 1
Principal Bankers:	Allied Irish Bank Bank Centre Ballsbridge Dublin 4 Bank of Ireland Main Street Blackrock Co. Dublin
Principal Investment Managers / Financial Advisors	J & E Davy Davy House 49 Dawson Street Dublin 2 State Street Global Advisors Europe Limited 2 Park Place Upper Hatch Street Dublin 2

Solicitors:

Mason Hayes & Curran Solicitors
South Bank House
Barrow Street
Dublin 4

Patrick J. Farrell & Co. Solicitors
Newbridge
Co. Kildare

Martin, Tynan, O'Donovan Solicitors
78 O'Connell Street
Limerick
V94 8X68

Kerin, Hickman & O'Donnell Solicitors
2 Bindon Street
Ennis
Co Clare

Nash, McDermott & Co. Solicitors
Templemore
Co. Tipperary

AJP McDonald Solicitors
30 Upper Pembroke St.,
Dublin 2

STATEMENT OF TRUSTEES' RESPONSIBILITIES

The Trustees are responsible for preparing the Trustees' report and the financial statements of the Congregation of the Sisters of Mercy South Central Province.

The Trustees are required to prepare financial statements for each financial year that give a true and fair view of the Charity's assets, liabilities and financial position as at the end of the financial year and of the surplus or deficit of the Charity for the financial year. The Trustees have prepared the financial statements in accordance with Generally Accepted Accounting Practice in Ireland (accounting standards issued by the Financial Reporting Council of the UK, including Financial Reporting Standard 102 *The Financial Reporting Standard applicable in the UK and Republic of Ireland*) and the Statement of Recommended Practice applicable to Charities preparing the financial statements in accordance with the Financial Reporting Standard applicable in the UK and Republic of Ireland (FRS 102), (Charities' SORP (FRS 102)).

The Trustees shall not approve the financial statements unless they are satisfied that they give a true and fair view of the Charity's assets, liabilities and financial position as at the end of the financial year and the surplus or deficit of the Charity for the financial year.

In preparing these financial statements, the Trustees are required to:

- select suitable accounting policies and then apply them consistently;
- make judgements and estimates that are reasonable and prudent;
- state whether the financial statements have been prepared in accordance with applicable accounting standards and identify the standards in question, subject to any material departures from those standards being disclosed and explained in the notes to the financial statements; and
- prepare the financial statements on the going concern basis unless it is inappropriate to presume that the Charity will continue in business.

The Trustees are responsible for keeping adequate accounting records that are sufficient to:

- correctly record and explain the transactions of the Charity;
- enable, at any time, the assets, liabilities, financial position and surplus or deficit of the Charity to be determined with reasonable accuracy; and
- enable those financial statements to be audited.

The Trustees are also responsible for safeguarding the assets of the Charity and hence for taking reasonable steps for the prevention and detection of fraud and other irregularities.

On behalf of the board



Sr. Brenda Dolphin



Sr. Patricia O' Meara

Date: 7 July 2023